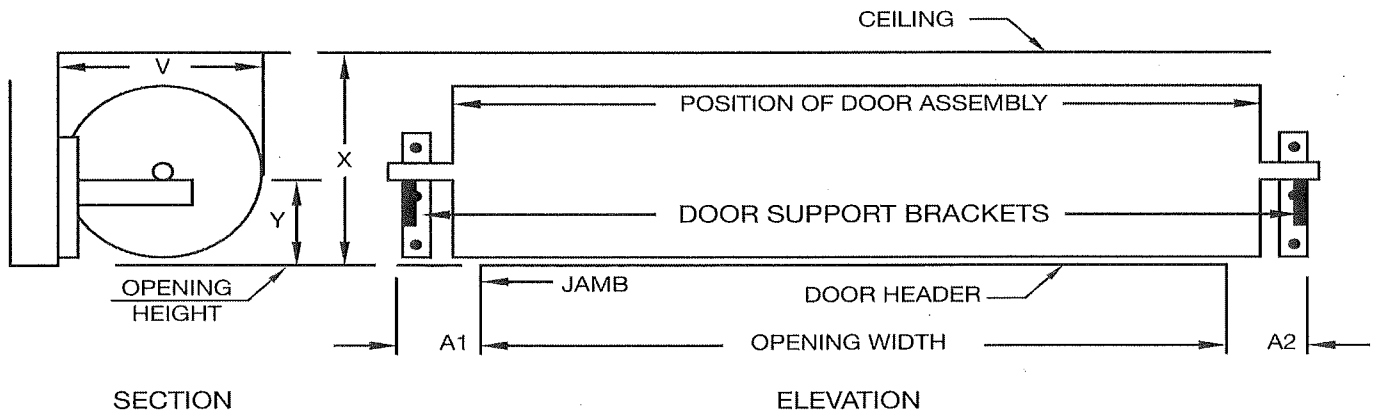


**ASTA DOOR CORPORATION
CLEARANCE REQUIREMENTS
MODELS 201, 201HD, 202, 202HD, 203, 203IM, 204, 204IM, and 205**

DIMENSION PANEL (MINIMUM HEIGHTS INDICATED)						
	HEIGHT	*A-1	*A-2	X	Y	V
MANUAL/ PUSH-UP ROPE	UP TO 8'	6"	6"	20"	9 1/2"	20"
	UP TO 10'	6"	6"	21"	10"	21"
REDUCTION GEAR CHAIN HOIST OR ELECTRIC OPERATOR	UP TO 8'	6"	9"	20"	10"	20"
	UP TO 10'	6"	9"	21"	11"	21"
	UP TO 16'	6"	9"	23"	11"	23"
	UP TO 20'	7"	10"	24"	12"	24"

***SIDE ROOM - FOR MODELS 201HD, 202HD, AND 205 ADD 1" TO A-1 AND A-2
DIMENSION FOR UP TO 16' HIGH (UP TO 20' ALREADY INCLUDED)
FOR THE 203, 203IM, 204, AND 204IM ADD 1 1/2" TO A-1 AND A-2**

**A-2* DIMENSIONS IS CLEARANCE DIMENSION FOR EITHER CHAIN HOIST OR
MOTOR OPERATOR REGARDING BRACKET POSITION ONLY.
DIMENSION DOES NOT INCLUDE OPERATOR ITSELF.**



CEILING: LOCATE DIMENSIONS AND CLEARANCE ON DIMENSION PANEL. STANDING ON THE INSIDE FACING OUT. DRIVE TYPE IS ON RIGHT SIDE UNLESS OTHERWISE SPECIFIED.