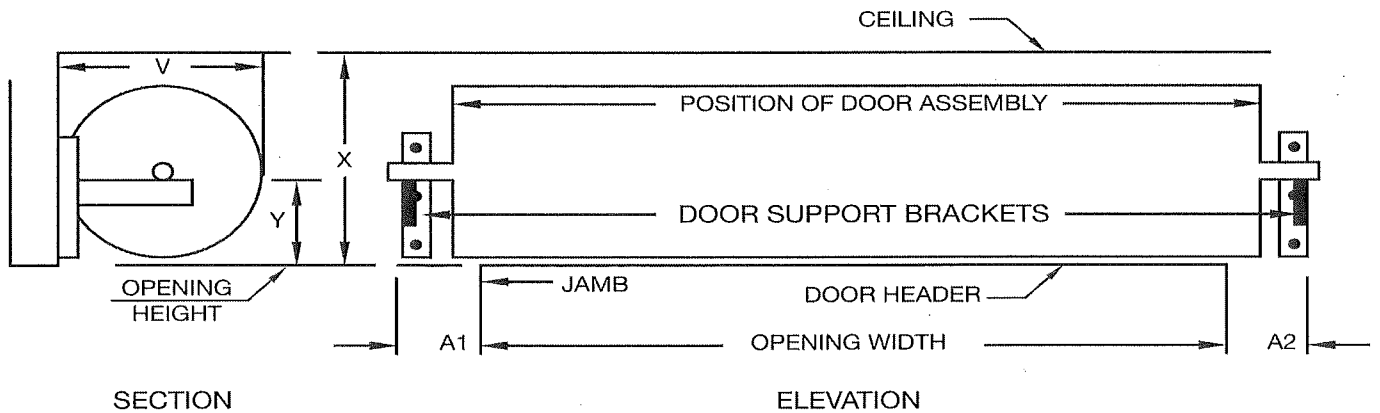


**ASTA DOOR CORPORATION  
CLEARANCE REQUIREMENTS  
MODELS 201, 201HD, 202, 202HD, 203, 203IM, 204, 204IM, and 205**

| <b>DIMENSION PANEL (MINIMUM HEIGHTS INDICATED)</b>             |           |      |      |     |        |     |
|----------------------------------------------------------------|-----------|------|------|-----|--------|-----|
|                                                                | HEIGHT    | *A-1 | *A-2 | X   | Y      | V   |
| <b>MANUAL/ PUSH-UP<br/>ROPE</b>                                | UP TO 8'  | 6"   | 6"   | 20" | 9 1/2" | 20" |
|                                                                | UP TO 10' | 6"   | 6"   | 21" | 10"    | 21" |
| <b>REDUCTION GEAR<br/>CHAIN HOIST OR<br/>ELECTRIC OPERATOR</b> | UP TO 8'  | 6"   | 9"   | 20" | 10"    | 20" |
|                                                                | UP TO 10' | 6"   | 9"   | 21" | 11"    | 21" |
|                                                                | UP TO 16' | 6"   | 9"   | 23" | 11"    | 23" |
|                                                                | UP TO 20' | 7"   | 10"  | 24" | 12"    | 24" |

**\*SIDE ROOM - FOR MODELS 201HD, 202HD, AND 205 ADD 1" TO A-1 AND A-2  
DIMENSION FOR UP TO 16' HIGH (UP TO 20' ALREADY INCLUDED)  
FOR THE 203, 203IM, 204, AND 204IM ADD 1 1/2" TO A-1 AND A-2**

**A-2\* DIMENSIONS IS CLEARANCE DIMENSION FOR EITHER CHAIN HOIST OR  
MOTOR OPERATOR REGARDING BRACKET POSITION ONLY.  
DIMENSION DOES NOT INCLUDE OPERATOR ITSELF.**



**CEILING: LOCATE DIMENSIONS AND CLEARANCE ON DIMENSION PANEL. STANDING ON THE INSIDE FACING OUT. DRIVE TYPE IS ON RIGHT SIDE UNLESS OTHERWISE SPECIFIED.**